

Optimize Land Asset Management

A unified platform that enhances land asset life cycle management through integrated land management, GIS analysis, and location intelligence.

Benefits

Consolidate and Save with One Platform

The Pandell Whitestar Platform™ is an all-in-one solution for energy companies, combining land acquisition and asset management software, GIS analysis, geospatial data, and land records and mapping services into a single system. This integration reduces supplier complexity, streamlines operations, and cuts costs.

Make Efficient Decisions

The integrated solution delivers location intelligence through a robust basemap, ensuring up-to-date information for informed land asset management decisions. It improves workflows, reduces compliance risks, and enhances operational efficiency.

Maximize Investments and Reduce Risks

With data layers such as CultureHD™, Whitestar Energy Layer™, and ParcelsHD+™, companies gain access to extensive GIS datasets that facilitate informed site selection and land acquisition. This extensive and detailed dataset drives investment strategies that maximize ROI, minimize risks, and help ensure compliance.

Features

Pandell Land and GIS Suite™

A software suite fully integrated with Esri's ArcGIS technology, including Pandell Projects™ and LandWorks™, that empowers energy companies to simplify land acquisition, optimize asset management, maximize revenue, and efficiently manage complex GIS operations.

Whitestar Data-as-a-Service™

Whitestar location intelligence unifies US national datasets into a real-time GIS schema, offering energy companies access to critical cultural, environmental, and other spatial data for integrated analysis and planning.

Our high-fidelity basemap — refined over 30 years from authoritative survey plats — ensures reliable, up-to-date information to support informed decisions.

With datasets including quarterly updates for 4.5 million US oil and gas wells, all data is centralized in one place, ensuring consistency and eliminating conversion errors. ParcelsHD+ and Whitestar TrueGRID™ provide detailed, actionable data to optimize land acquisition and asset management decisions.

Integrated Mapping and Land Records Solutions

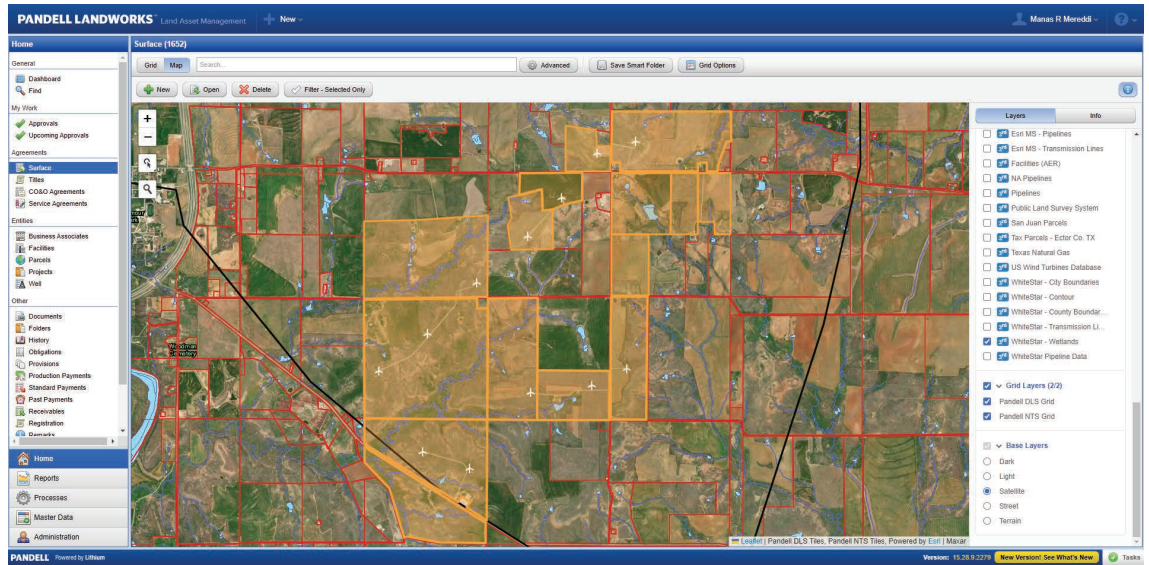
Combining automatic mapping, OCR and AI-assisted digitization, and expert GIS mapping services, our solution leverages integrated Whitestar land grid data to streamline land management. It ensures accurate mapping, reducing reliance on third-party corrections and speeding up updates for land ownership and boundaries.



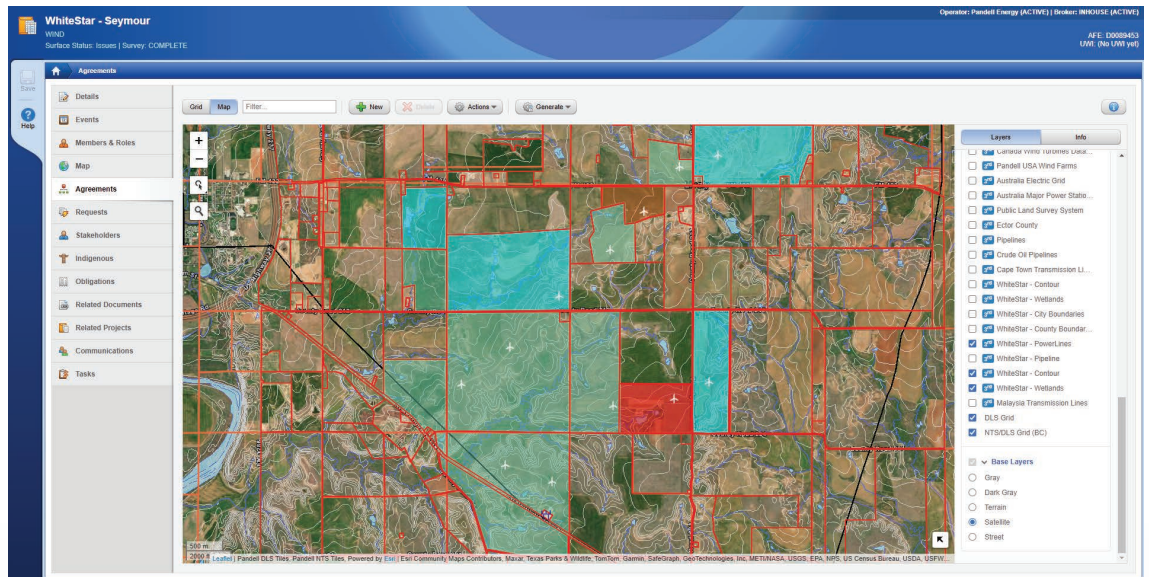
Features

OCR and AI technology digitizes agreements for quick, reliable searches and reports. For companies lacking GIS expertise, our team creates precise boundary polygons, ensuring accurate land records management.

Screenshots



Identify optimal locations near existing turbines and power lines, while avoiding wetlands with Whitestar Parcels and Culture data.



Leverage Whitestar data, including TrueGRID, for precise geometry and acreage calculations for renewable projects.

For Pricing, Demos and More Information, visit

PANDELL.COM

ESG provides a complete software platform for energy providers, enabling critical solutions in market and asset management. ESG combines a SaaS architecture, flexible integration, infrastructure planning data, and continuous innovation with sector expertise and decades of experience to provide the most adopted software platform in global energy markets, including Energy Retail and Renewables. The company serves over 800 blue chip energy players and over 40 million end users worldwide. Learn more at www.esgglobal.com.